

# Voting in Toronto is Easy

## WAYS TO VOTE IN-PERSON

**During Advance Vote Days:**  
**June 8 to 13**  
From 10:00AM to 7:00PM

**On Election Day:**  
**June 26**  
From 10:00AM to 8:00PM

## WHERE TO VOTE?

Advance voting locations and election day voting location posted June 1st online at [toronto.ca/myvote](http://toronto.ca/myvote).

### Advance Vote Days:

#### NEW THIS ELECTION: VOTE ANYWHERE!

You can vote at any advance voting locations across the city. That's right - If you see a voting location you can walk in and vote!

**Election Day:** You vote at your assigned voting location.



## DO I NEED TO BE ON THE VOTERS' LIST?

You only need to be on the Voters' List to apply for a Mail-in Voting package.

Check if you are on the voters' list by visiting [toronto.ca/myvote](http://toronto.ca/myvote). Type in your name, date of birth and address. **If you are not on the list, click 'Register to vote' to add your information.**

**If you are not on the list, you can add yourself to the list when you go to vote in person.**

## WHO CAN VOTE?

You can vote if you are:

1. At least 18 years old
2. A Canadian citizen
3. A resident in the city of Toronto, or you or your spouse own or rent property in Toronto

## WAYS TO VOTE BY MAIL-IN BALLOT

- Voting in person is easier than ever but if you can't vote in person you can vote by mail.
- You must be on the **Voters' List** to apply for a mail-in ballot.
- The deadline to apply is **May 26 by 4:30 PM**.
- The deadline for ballots to be received by Toronto Elections is **June 15 by 12:00 PM (noon)**. **This is 11 days before election day.**
- Mail-in Voting packages will be sent out starting May 23. You return your completed package by mail using the pre-paid postage or by dropping it off at one of the yellow drop boxes located in each ward between June 1 to 15 at noon.

**Apply Online:** Visit [toronto.ca/VoteByMail](http://toronto.ca/VoteByMail).

**Apply by Phone:** Call Toronto Elections at (416) 338-1111 (press option 5).

## HOW TO VOTE BESIDES IN-PERSON OR BY MAIL?

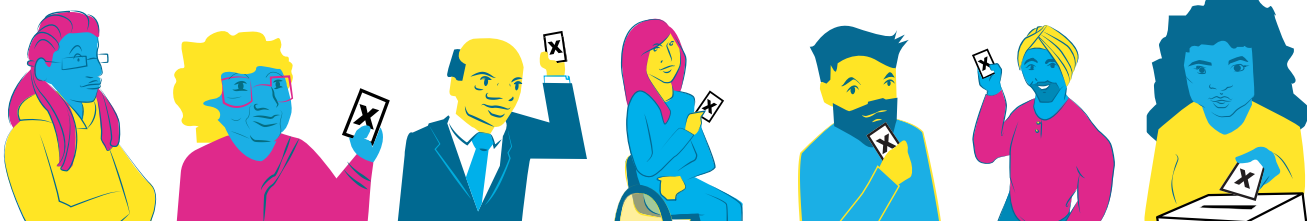
For information on other voting methods, please visit [toronto.ca/elections/voters](http://toronto.ca/elections/voters) or contact Toronto Elections at 416-339-1111.

## JOB ALERT:

Want to get more involved as a poll worker?

Visit [toronto.ca/elections](http://toronto.ca/elections) to apply!

You do not need to be a citizen to be a poll worker.



## Bring any of the following documents to prove where you live:

- Ontario driver's licence
- Ontario Health Card (photo card)
- Ontario Photo Card
- Ontario motor vehicle permit (vehicle portion)
- cancelled personalized cheque
- mortgage statement, lease or rental agreement relating to property in Ontario
- insurance policy or insurance statement
- loan agreement or other financial agreement with a financial institution
- document issued or certified by a court in Ontario
- any other document from the government of Canada, Ontario or a municipality in Ontario or from an agency or such a government
- any document from a Band Council in Ontario established under the *Indian Act* (Canada)
- income tax assessment notice
- child tax benefit statement
- statement of employment insurance benefits paid T4E
- statement of old age security T4A (OAS)
- statement of Canada Pension Plan benefits T4A (P)
- Canada Pension Plan statement of contributions
- statement of direct deposit for Ontario Works
- statement of direct deposit for Ontario Disability Support Program
- Workplace Safety and Insurance Board statement of benefits T5007
- property tax assessment
- credit card statement, bank account statement, or RRSP, RRIF, RHOSP or T5 statement
- CNIB Card or a card from another registered charitable organization that provides services to persons with disabilities
- hospital card or record
- document showing campus residence, issued by the office or officials responsible for student residence at a post-secondary institution
- document showing residence at a long-term care home under the *Long-Term Care Homes Act, 2007*, issued by the Administrator for the home
- utility bill for hydro, water, gas, telephone or cable TV or a bill from a public utilities commission
- cheque stub, T4 statement or pay receipt issued by an employer
- transcript or report card from a post-secondary school

